

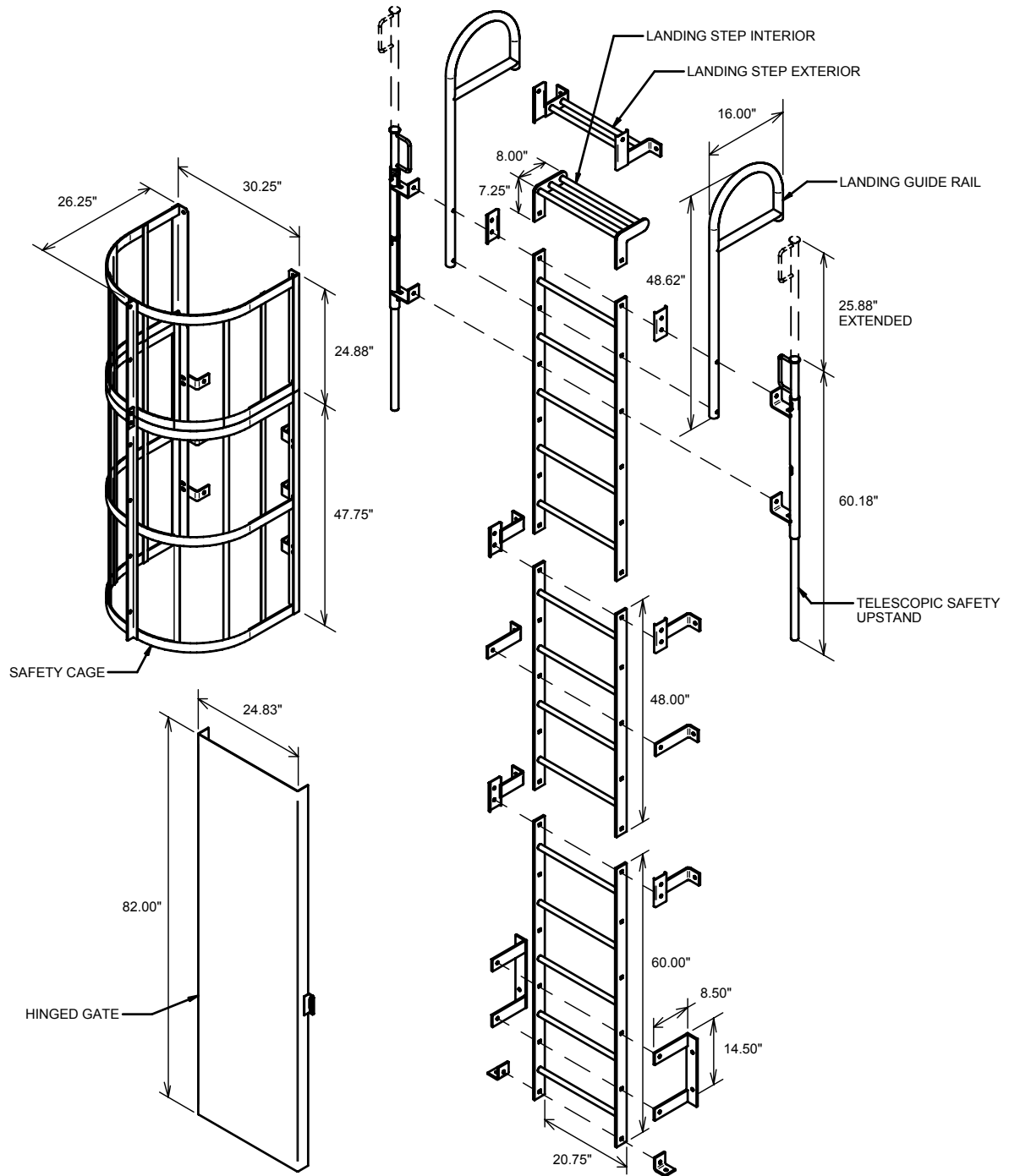


ACUDOR

www.acudor.com
U.S.A.: info@acudor.com / 800.722.0501
CANADA: info@acudor.ca / 844.228.3671
INTERNATIONAL: info@acudorintl.com
(905) 428.2240

STEEL LADDER

STANDARD / HEAVY DUTY



STANDARD LADDER MODULES: 48.00" AND 60.00" (CAN COMBINE TO DIFFERENT LENGTHS)

OPTIONS:

- STANDARD DUTY LADDER (2-1/2" X 5/16" STRINGER, 3/4" DIA. RUNG)
- HEAVY DUTY LADDER (2-1/2" X 3/8" STRINGER, 1" DIA. RUNG)

MATERIAL:

- STEEL ASTM A36

FINISH:

- POWDER COATED TO SAFETY YELLOW
- GALVANIZED

JOB NAME:

APPROVED BY:

CUSTOMER:

DATE: