

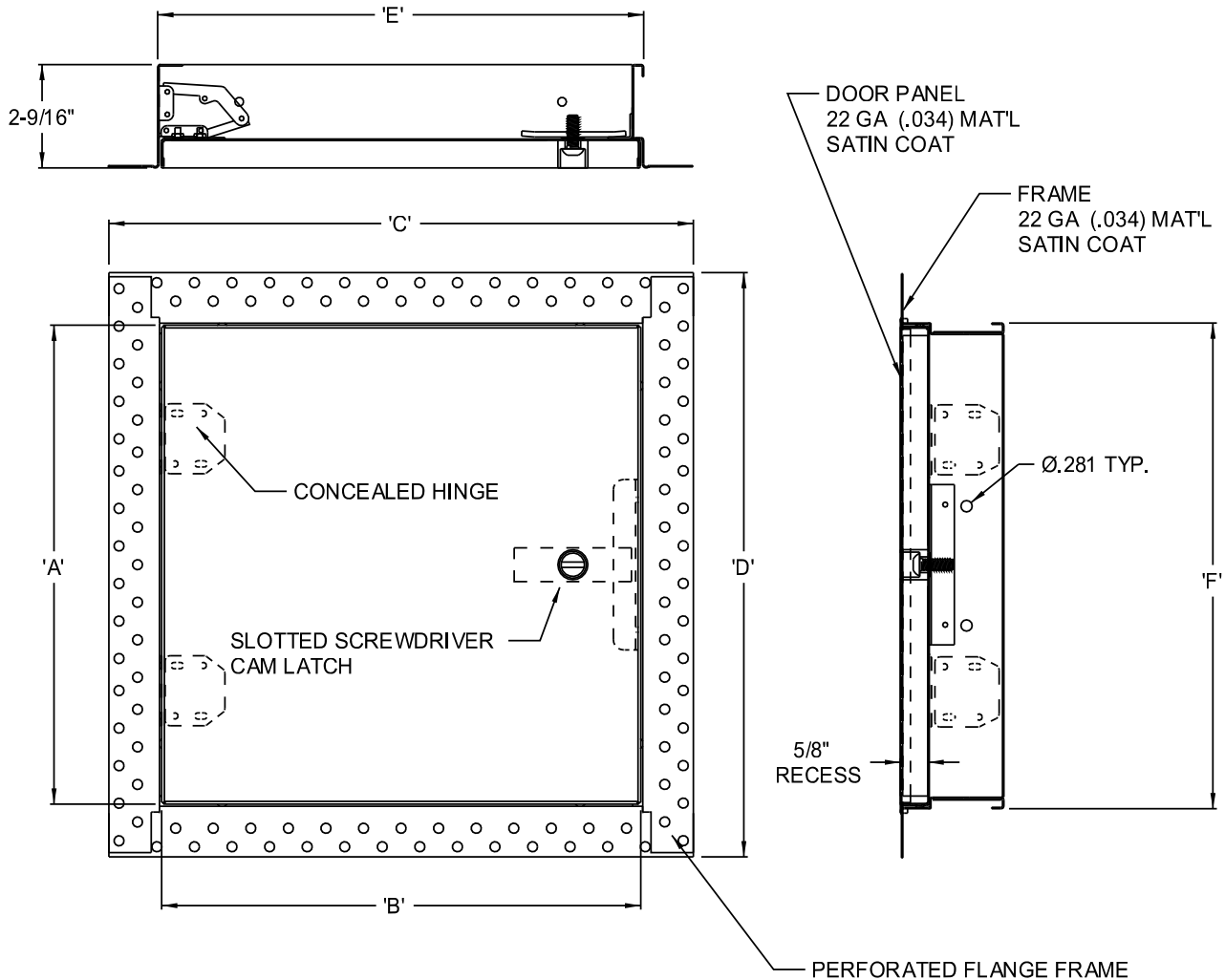


www.acudor.com  
 U.S.A.: info@acudor.com / 800.722.0501  
 CANADA: info@acudor.ca / 844.228.3671  
 INTERNATIONAL: info@acudorintl.com  
 (905) 428.2240

# DW-5015

## RECESSED FOR DRYWALL

| QTY. | NOMINAL SIZE        | A           | B           | C           | D           | E           | F           | LOCK |
|------|---------------------|-------------|-------------|-------------|-------------|-------------|-------------|------|
|      | 12 x 12 (305 x 305) | 11.87 (301) | 11.87 (301) | 14.48 (368) | 14.48 (368) | 12.04 (306) | 12.04 (306) | 1    |
|      | 18 x 18 (457 x 457) | 17.87 (454) | 17.87 (454) | 20.48 (520) | 20.48 (520) | 18.04 (458) | 18.04 (458) | 1    |
|      | 24 x 24 (610 x 610) | 23.87 (606) | 23.87 (606) | 26.48 (673) | 26.48 (673) | 24.04 (611) | 24.04 (611) | 2    |
|      | 24 x 36 (610 x 914) | 35.87 (911) | 23.87 (606) | 26.48 (673) | 38.48 (977) | 24.04 (611) | 36.04 (915) | 2    |
|      |                     |             |             |             |             |             |             |      |



**STANDARD FEATURES:** SLOTTED SCREWDRIVER CAM LATCH  
 5/8" RECESSED DOOR PANEL  
 SATIN COAT STEEL, MILL FINISH

**OPTIONS:**

- LOCK TYPE**
- CYLINDER LOCK & KEY
  - ALLEN HEAD CAM LATCH
  - SPANNER HEAD CAM LATCH
  - OTHER

- MATERIAL**
- STAINLESS STEEL
  - OTHER

- FINISH**
- 304 2B MILL
  - OTHER

JOB NAME:

APPROVED BY:

CUSTOMER:

DATE: