

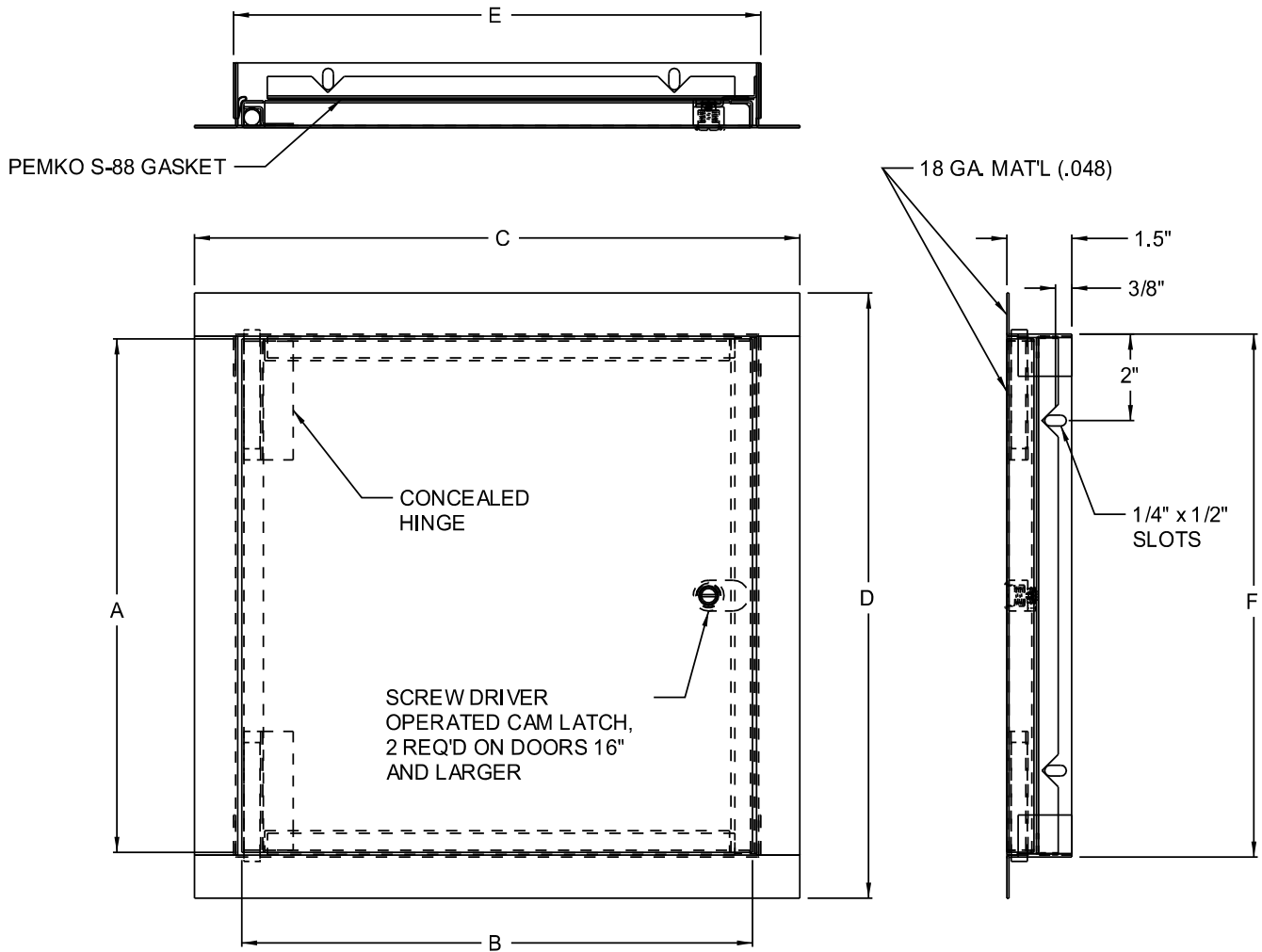


www.acudor.com  
 U.S.A.: info@acudor.com / 800.722.0501  
 CANADA: info@acudor.ca / 844.228.3671  
 INTERNATIONAL: info@acudorintl.com  
 (905) 428.2240

# AS-9000

## AIR SEAL FLUSH MOUNT

QTY.	NOMINAL SIZE	A	B	C	D	E	F	LATCH
	8 x 8 (203 x 203)	7.875 (200)	7.843 (200)	10.00 (254)	10.00 (254)	8.19 (208)	8.09 (205)	1
	12 x 12 (305 x 305)	11.875 (302)	11.843 (301)	14.00 (355)	14.00 (355)	12.19 (310)	12.09 (307)	1
	16 x 16 (406 x 406)	15.875 (403)	15.843 (402)	18.00 (457)	18.00 (457)	16.19 (411)	16.09 (409)	2
	18 x 18 (457 x 457)	17.875 (454)	17.843 (453)	20.00 (508)	20.00 (508)	18.19 (462)	18.09 (459)	2
	24 x 24 (610 x 610)	23.875 (606)	23.843 (605)	26.00 (660)	26.00 (660)	24.19 (614)	24.09 (612)	2
	24 x 36 (610 x 914)	35.875 (911)	23.843 (605)	26.00 (660)	38.00 (965)	24.19 (614)	36.09 (917)	2



STANDARD FEATURES: SCREW DRIVER OPERATED CAM LATCH,  
 CARBON STEEL, PRIME COAT BAKED ENAMEL FINISH

OPTIONS:

LOCK TYPE

- CYLINDER LOCK & KEY
- ALLEN HEAD CAM LATCH
- SPANNER HEAD CAM LATCH
- THUMB TURN LATCH
- OTHER

MATERIAL

- STAINLESS STEEL
- OTHER

FINISH

- #4 SATIN POLISH
- OTHER

JOB NAME:

APPROVED BY:

CUSTOMER:

DATE: